

Drabek Elementary



Welcome
**BACK TO
SCHOOL**

OPEN HOUSE

2025.2026



WELCOME!

MEET THE TEAM

- April Marsters, Principal
- Marcy Sellers, Assistant Principal
- Takisha Thibodeaux, Counselor
- Rebekah Lusk-Tillman, CCC
- Nathalie Frazier, Attendance
- Cindy McCroskey, Nurse/Rebecca Ong, Nurse Aide
- Chelsea Davis, Receptionist
- Dede Koonce, Executive Assistant



COMMUNICATION

HOW DO I RECEIVE INFORMATION ABOUT WHAT'S GOING ON IN THE CLASSROOM AND SCHOOL?

- CLASSROOM NEWSLETTER
- PARENT NEWSLETTER (EMAILED EVERY FRIDAY)
- FRIDAY FOLDER



HOW DO I COMMUNICATE WITH MY TEACHER?

- Teacher email: emily.morales@fortbendisd.gov
megan.wright@fortbendisd.gov
- Conference period: 9:45-10:30
- You can expect a response within 24-48 hours.
Teachers are not available to parents or to respond to emails during instructional time.





ARRIVAL & DISMISSAL

ARRIVAL

- Building Opens at 7:30 a.m.
- Breakfast: 7:30 a.m.–7:55 a.m.
- First bell is at 7:55 a.m. Students should arrive no later than 8:00 a.m. so they can be in their classroom by 8:05 a.m.



DISMISSAL

- School Ends at 3:25 p.m.
- If you are running late, please call the front office.
- The building closes at 3:50 p.m., so PLEASE BE ON TIME TO PICK UP YOUR CHILD
- CHANGING DISMISSAL PLANS: You must e-mail your child's teacher by 2:00 p.m. if you need to change the way your child goes home



DISMISSAL: SEVERE WEATHER



- *Students will be allowed to walk on light, rainy days.
- *An alternate “Rainy Day/Bad Weather” dismissal announcement will be made when it is unsafe to walk due to heavy rain, thunder, and/or lightning.
- *This will be announced prior to 3:00 PM by email.
- *Once called, only an adult or older sibling LISTED in Skyward WITH a government issued picture ID in hand will be able to retrieve students whose “Rainy day/Bad Weather” plan is to still walk/bike. If the alternate plan is to be a car rider, then they can be picked up in the front drive.



ATTENDANCE

TEXAS LAW

- Texas Education Code Section 25.092 State Law requires that students must attend 90% of of the time a class is offered in order to receive credit for the class or to be promoted to the next grade level. This school year has a total of 175 days; therefore, students may only miss 18 days during the school year.
- **A STUDENT CANNOT MISS MORE THAN 18 DAYS OF SCHOOL**
- **10 OR MORE UNEXCUSED ABSENCES IS A REFERRAL TO TRUANCY COURT**



ABSENCES

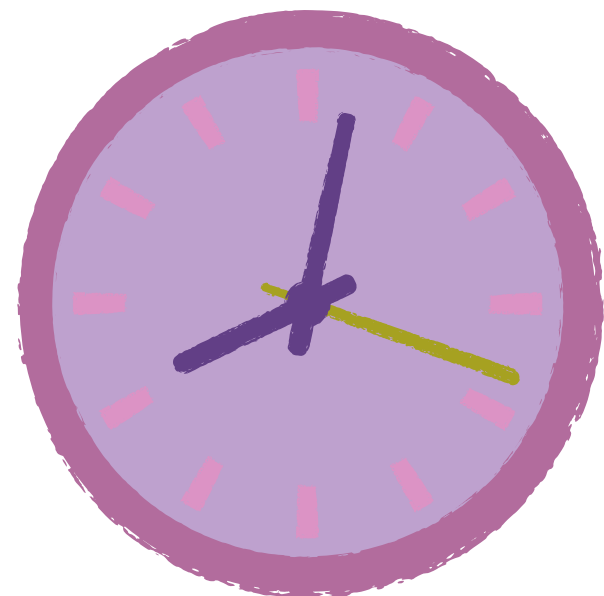
- You must provide an absence note when your child is out of school.
- You have 5 days to turn in a note to the attendance office. If you do not send a note, that absence is unexcused.
- Multiple unexcused absences will result in a Truancy Meeting with District Attendance Office Personnel and administration.
- You can email your excuse & doctor's notes to:
AttendanceRDE@fortbendisd.gov

Attendance Clerk, Nathalie Frazier 281-634-6614 nathalie.frazier@fortbendisd.gov



ABSENCES

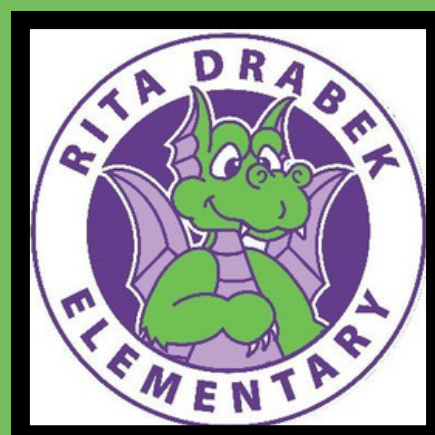
- Students who are not in their classroom at 10AM will be marked absent. If they are in the clinic at 10 AM, they will be marked absent and a note entered in Skyward of their location.
- All absences require a note.
- Excessive absences affect learning and student promotion.



ABSENCE LETTERS FROM RDE

Every month, attendance letters will be sent home to parents notifying them if their child is showing a pattern of excessive absences. If the trend continues throughout the school year, a meeting will be requested with administration to discuss the excessive absences and make a plan to improve the student's overall attendance record.





TARDIES

TARDIES

- First bell rings at 7:55, giving time for students to be IN their classroom by 8:00 AM.
- Tardy Bell rings at 8:05 a.m.- if your child is not in their classroom at 8:05 a.m., they are tardy and require parent sign in.
- Any student entering the building after school has begun, or re-entering the building after leaving for an appointment, should sign in at the Front Office.
- Excessive late arrivals affect learning and student promotion.



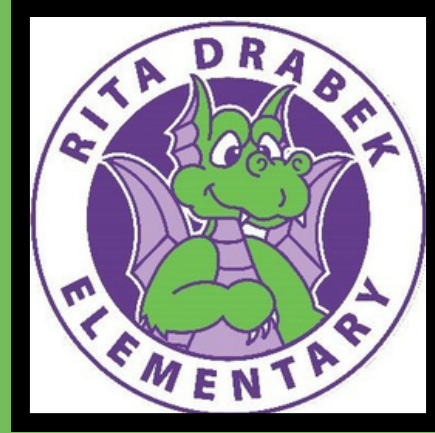


LEAVE EARLY

LEAVE EARLY FROM SCHOOL

- Parents/Guardians may sign out students at the Front Office.
- You must show your ID and be on the authorized pick up list.
- Students are not called out of class prior to a Parent/Guardian arriving on campus. Please allow enough time, prior to your appointment (at least 15 minutes) for the pick-up process.
- Excessive leave early check outs affect learning and student promotion.
- Students will not be checked out after 3:00 pm





NURSE

ILLNESS

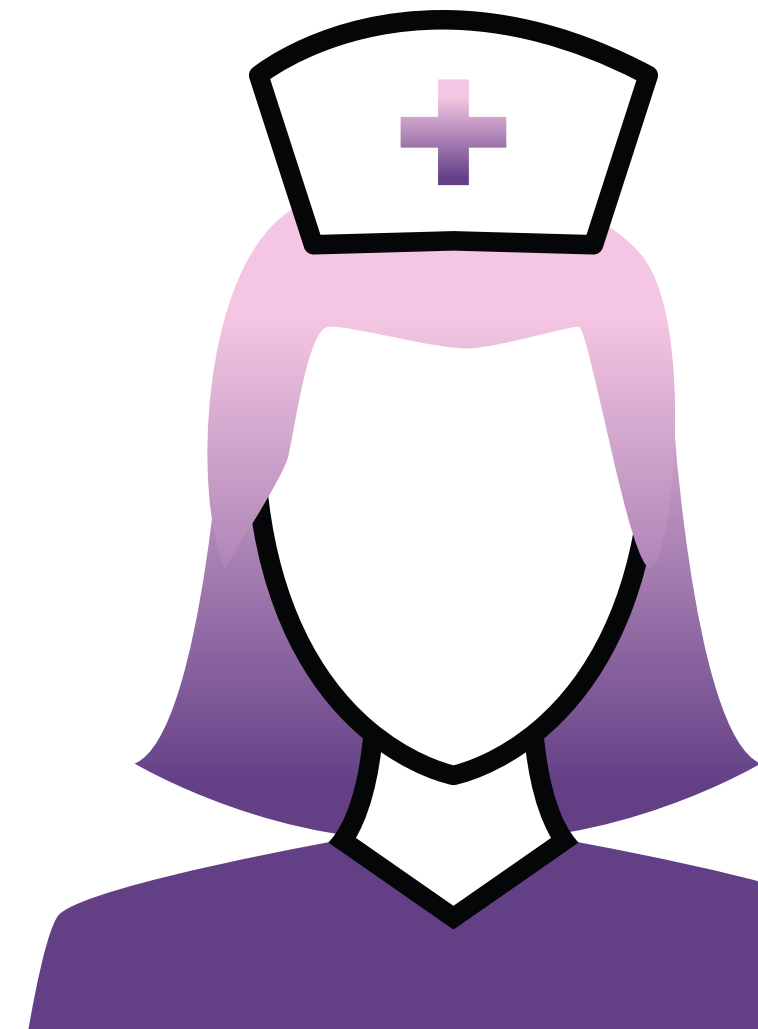
To prevent exposing other students unnecessarily to illness, a student should not come to school if he/she has the following symptoms:

- vomiting and/or diarrhea within the past 24 hours, an undetermined rash, a temperature of 100.0 or greater within the past 24 hours
- or has had fever reducing medication in order to prevent a fever within the past 24 hours

MEDICINE

Parents should not send medicine of any kind to school with their student, including cough drops. If your student needs medicine at school, you should make arrangements with the nurse.

School Nurse, Cindy McCroskey 281-634-6585 cynthia.mccroskey@fortbendisd.gov





BREAKFAST

BREAKFAST

- Breakfast is served from 7:30 am-7:55 am
- The cafeteria closes at 7:55 am, so if your child is going to eat breakfast then they need to be at school by 7:30 in order to give enough time to eat and get to class.
- Please bring your child to school early enough to allow time for them to eat breakfast. Your child will be tardy if they are not in their classroom before 8:05 am
- Tardies: Students are issued a tardy if they are not in their classroom when the tardy bell rings.



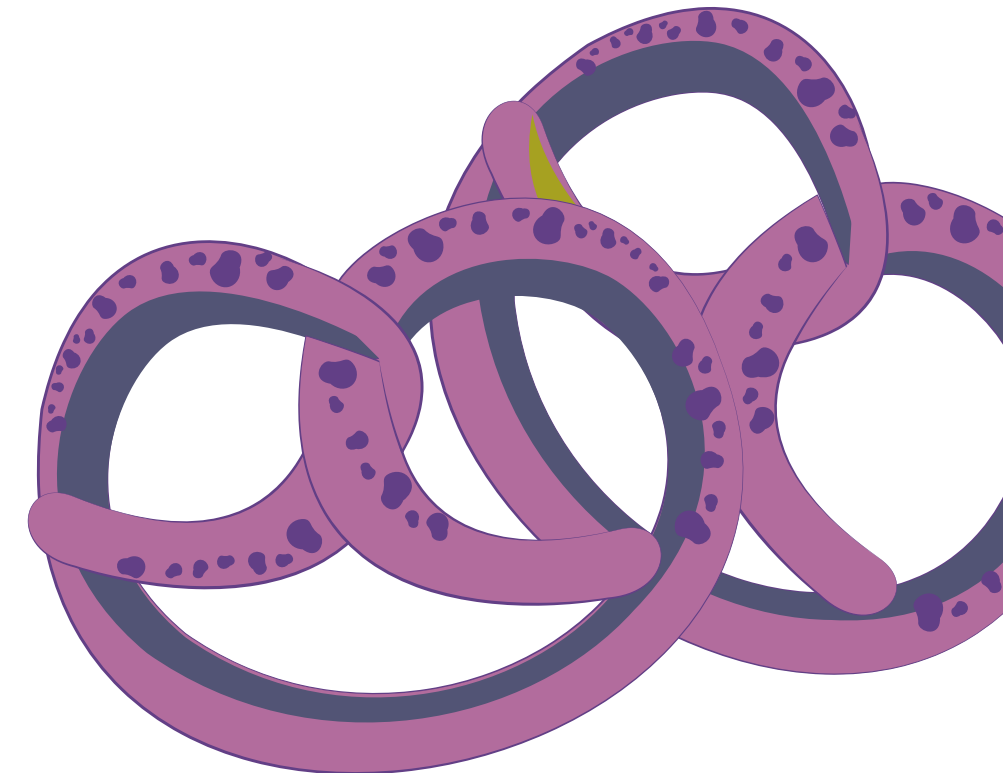
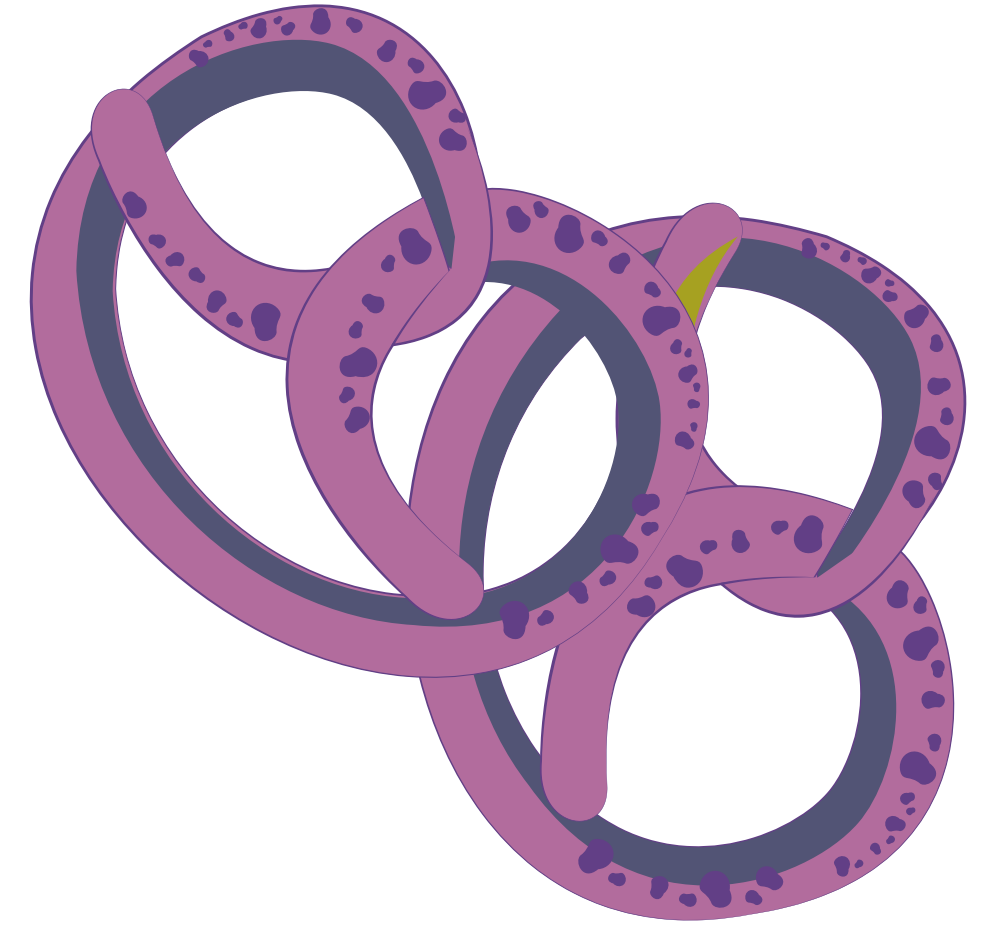
LUNCH & SNACK

LUNCH

- The District requests that all families complete the Free & Reduced Meals application at www.schoolcafe.com/fbisd. Menus and lunch payments can also be found through this link/app.
- LUNCH VISITOR SCHEDULE:
 - *Last names beginning in A-M can have visitors on odd numbered days
 - *Last names beginning in N-Z can have visitors on even numbered days
 - *Parents and students will also be seated at a visitor table.

SNACK

- Please pack a healthy snack for your child to eat in their classroom during designated snack time.
- Water bottles may contain only water. No gatorade, lemonade, or additives.





RECESS & P.E.

DRESS CODE

WHAT SHOULD MY CHILD WEAR?

- For safety purposes, students must wear closed-toed shoes with a back
- No flip-flops, slippers, or other slide-on shoes
- Sandals and Crocs are allowed with backstrap worn
- See Student Code of Conduct for all dress code details





STUDENT CODE OF CONDUCT

STUDENT CODE OF CONDUCT

- The Student Code of Conduct has been developed to provide you with the District's guidelines on behavior for our students.
- At Drabek Elementary, we follow the Student Code of Conduct with fidelity.
- To Access the Student Code of Conduct & The Student Parent Handbook, go to
*www.fortbendisd.com >> Departments >> Student Affairs



BULLYING VS PEER CONFLICT

Rudeness

Someone hurting your feelings by accident doesn't feel nice, but it is unplanned, thoughtless, and a social error.

Being Mean

Meanness may feel like bullying, but there are some differences. Kids who are being mean might do it once or twice. They do it to hurt someone and make them feel bad.

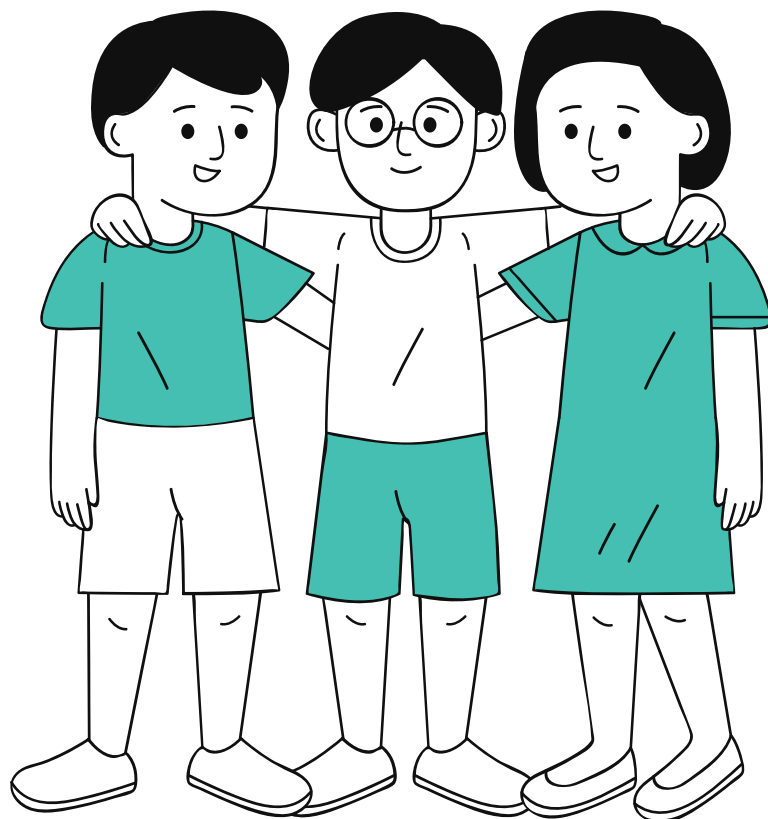
Peer Conflict

Peer conflict refers to disagreements or disputes that arise between individuals of similar age or social standing within a peer group. These conflicts are a normal and healthy part of social interaction and development, providing opportunities to learn how to disagree respectfully and find appropriate resolutions.

Bullying

Kids who bully intentionally hurt others and keep doing it without a sense of guilt or remorse.

- intentional
- aggressive
- imbalance of power
- one time significant event or repeated over time



STUDENT BADGES

- Students must wear their badges throughout the day. They can use them to scan for breakfast, lunch, and library books.
- Students must wear their badge to ride the bus to and from school. They will be required to scan their badge upon entry and exit.
- Student are responsible for bringing their badge to and from school each day. Lost badges will require the parent by pay a \$5.00 replacement fee in Skyward before their badge can be reprinted.





PBIS



MISSION

We will ensure all students learn at high levels with a focus on results in a nurturing environment.

VISION

We envision a school where learning is a shared journey built on collaboration, trust, and excellence.



DRAGONS LEAD.

L

LEARNING

DRAGONS SHOW THEIR LEARNING.

- Share Your Skills
- Think About Your Learning
- Learn Something New Every Day

E

EMPATHY

DRAGONS SHOW THEIR EMPATHY.

- Listen to Others
- Care About Other's Feelings
- When you make a mistake, apologize

A

ACCOUNTABILITY

DRAGONS SHOW THEIR ACCOUNTABILITY.

- Accept Responsibility
- Have Self-Control
- Do your best

D

DETERMINATION

DRAGONS SHOW THEIR DETERMINATION.

- Overcome Obstacles
- Believe in Yourself
- Problem Solvers

GUIDELINES FOR SUCCESS

At Drabek, we want to create a safe, positive, and equitable school where everyone feels successful and seen.



We're teaching our students to L.E.A.D. with pride!



DRAGONS L.E.A.D.

L

LEARNING

DRAGONS SHOW THEIR LEARNING.

- Share Your Skills
- Think About Your Learning
- Learn Something New Every Day

E

EMPATHY

DRAGONS SHOW THEIR EMPATH.

- Listen to Others
- Care About Other's Feelings
- When you make a mistake, apologize

A

ACCOUNTABILITY

DRAGONS SHOW THEIR ACCOUNTABILITY.

- Accept Responsibility
- Self -Control
- Do your best

D

DETERMINATION

DRAGONS SHOW THEIR DETERMINATION.

- Overcome Obstacles
- Believe in Yourself
- Problem Solving

FBISD: LEAD THE PAC DRABEK'S ROLE

At Drabek, it is our goal to be PROFESSIONAL, ACCOUNTABLE, and COMMUNICATE with all students, parents, and community members.

We are committed to:

- Showing Respect
- Holding ourselves to a high standard
- Going above & beyond what is required
- Listening
- Showing Kindness

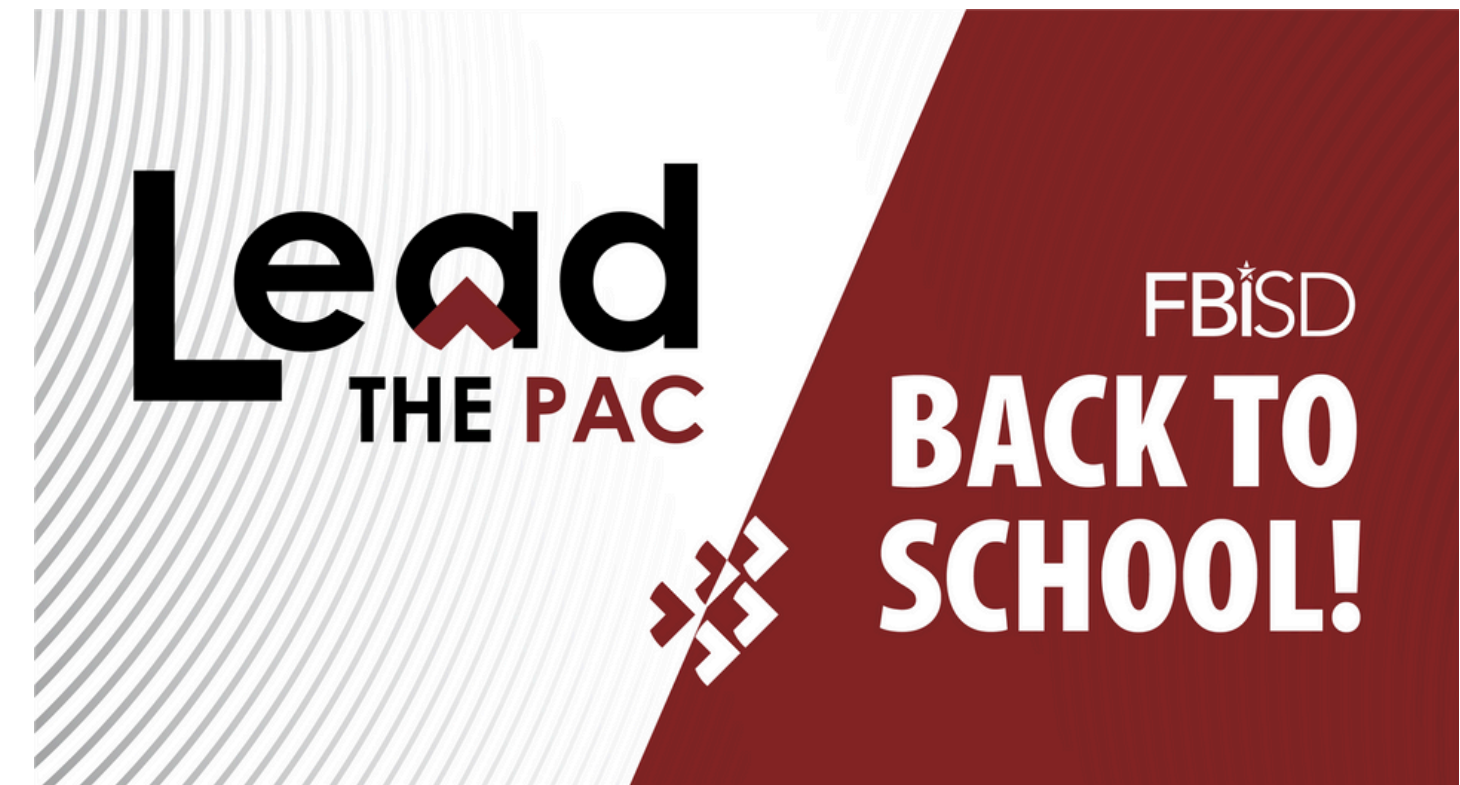


PROFESSIONALISM

ACCOUNTABILITY

COMMUNICATION

FBISD: LEAD THE PAC PARENT'S ROLE



Partner with us and be committed to:

- Send your child to school regularly, on time, and prepared to learn
- Read Newsletters and Information in your child's Friday Folder to make sure you are informed about your child's academic progress, behavior, and events at school
- Communicate respectfully when concerns arise about your child

PROFESSIONALISM

ACCOUNTABILITY

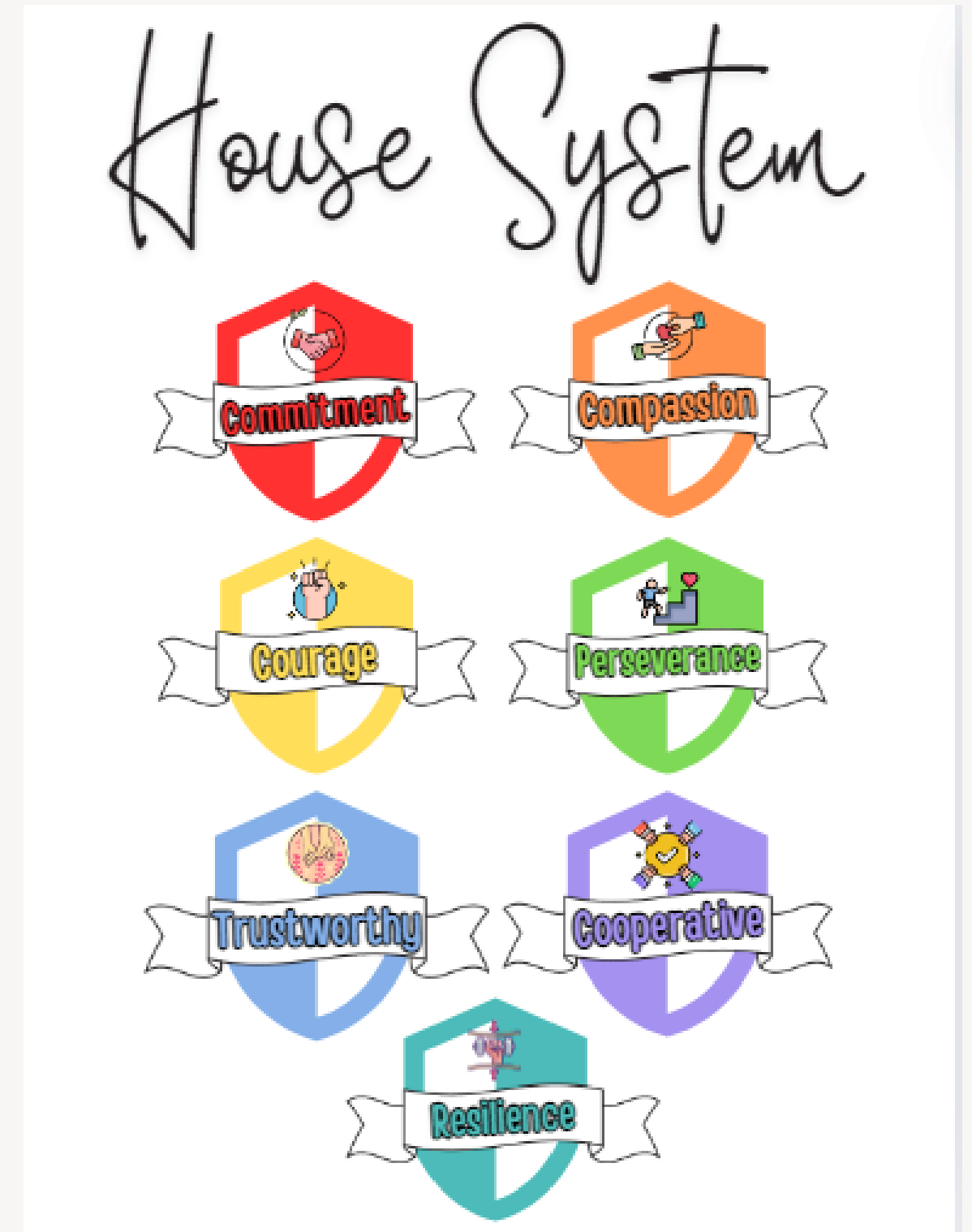
COMMUNICATION

HOUSE SYSTEM

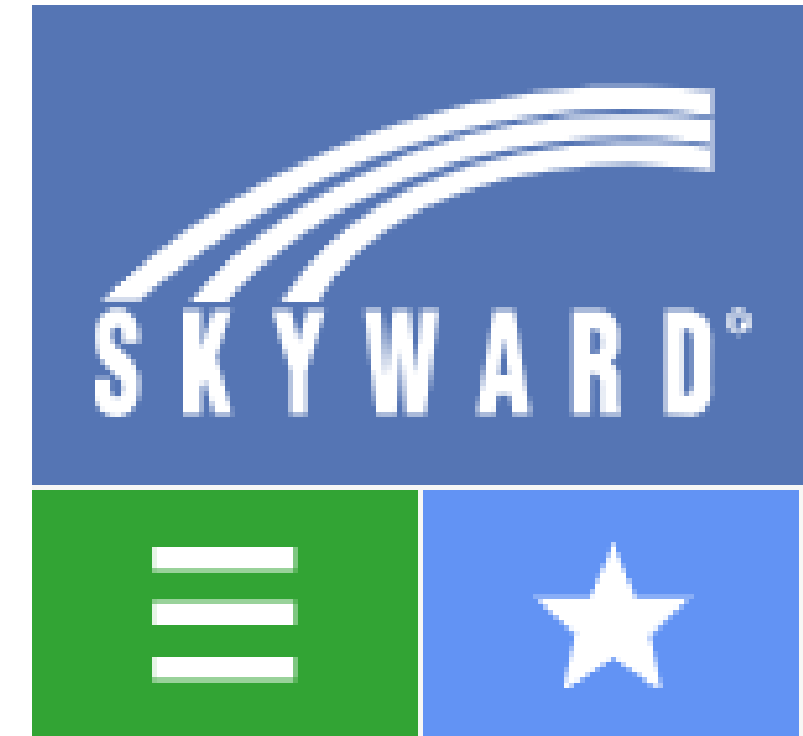


HOUSE OF DRAGONS

- It's a system where EVERY student has a place to belong, be supported, and be successful.
- Each classroom is assigned to a house (red, orange, yellow, green, blue, purple, teal)
- Students earn Leader Loot for showing good character traits, reaching academic goals, attendance, and having no tardies
- House Party: We will have a house party at the end of every nine weeks to celebrate our accomplishments. Students are encouraged to wear their house color on that day.



SKYWARD Q



SKYWARD REMINDERS



- Make sure all phone numbers, emergency contacts, and emails are current. Parents must make these changes in Skyward Q.
- We cannot let your child go home with anyone who is not listed on the emergency card and/or Skyward Q, so please make sure you list all names that are allowed to pick up your child.
- You can access your child's grades and attendance in Skyward Q.

SKYWARD Q CHANGES



- All parents must complete an online verification form located in Skyward Q for returning and new students- Help located in the library.
- This must be completed each year. It is due by **September 13.**



GRADES

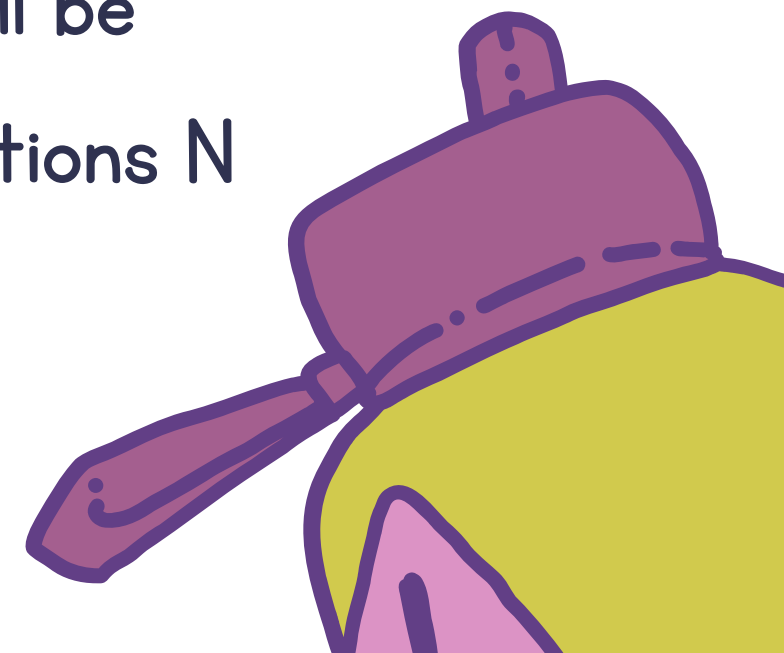
2ND, 3RD, 4TH, 5TH

- In Grades 2nd – 5th, student proficiency will be determined using a traditional grading scale.
- Student proficiency shall be reported using a 100 point system as outlined below: Letter Grade Range A 90 – 100 B 80 – 89 C 70 – 79 F Below 70 Explanation

Letter Grade	Range
A	90 – 100
B	80 – 89
C	70 – 79
F	Below 70

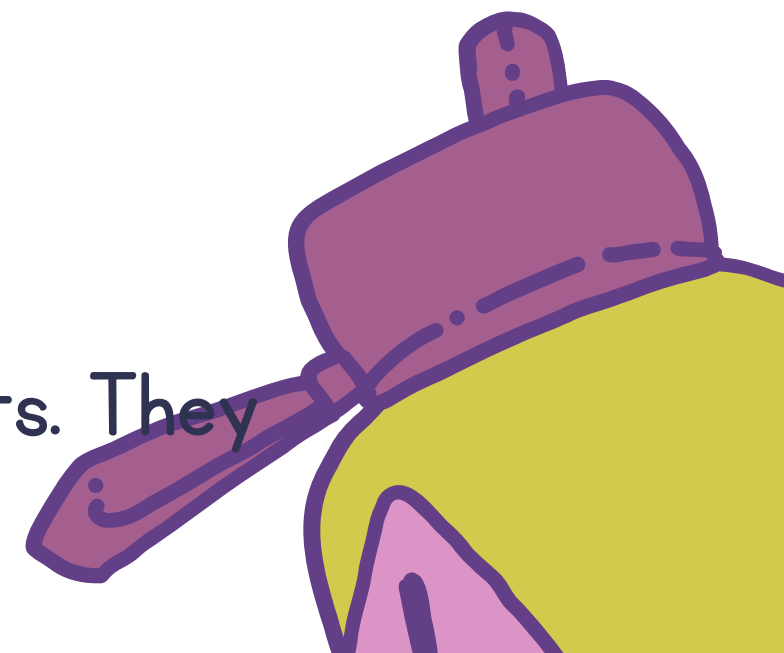
- In Elementary Enrichment Courses (Art, PE, Health, Music) student proficiency will be reported using two marks, S or N. Mark S Consistently Meets Standards/ Expectations N Not Progressing towards Standards/Expectations

Mark	Explanation
S	Consistently Meets Standards/ Expectations
N	Not Progressing towards Standards/Expectations



HOMWORK

- Reading: There is a homework folder the ELA Schoology course that has passages for students to read and other suggestions.
- SS: Students are asked to take their SS notebooks home each night to help them study. There are Unit and Concept folders in the SS Schoology course that students can go into and reread, study, or take notes on. Sometimes there are review games and textbook pages as well.
- Math: Homework goes home on Friday's and is due the following Friday.
- Planners: Students fill out their Success Criteria for learning each day in all subjects. They also add all grades and events on Monday's





BOOK BAGS & TAKE HOME BOOKS

LOST BOOKS OR BOOK BAGS

- Each child will soon bring home a book bag with a book to read at home.
- Please take care of the books and the bags
- There is a reimbursement fee for lost books and bags.
- Lost or damaged book from book bags: \$14
- You will pay the reimbursement fees on Revtrak on the FBISD website.

